

Custom All Aluminum Gooseneck and 5th Wheel Trailers

BUILT FOR SPEED

High Quality Trailers Built by Racers for Racers

SEMI, GOOSENECK, FIFTH WHEEL AND PULL-A-LONG TRAILERS

PILGRIM RACING TRAILER



Call for a Quote - 815.426.2761

www.tande-racetrailers.com











HERSCHER
HOME OF THE TIGERS



T's BENT
Auto Haulers







HERSCHER
HOME OF THE TIGERS

HERSCHER
HOME OF THE TIGERS

T&E
Auto Haus















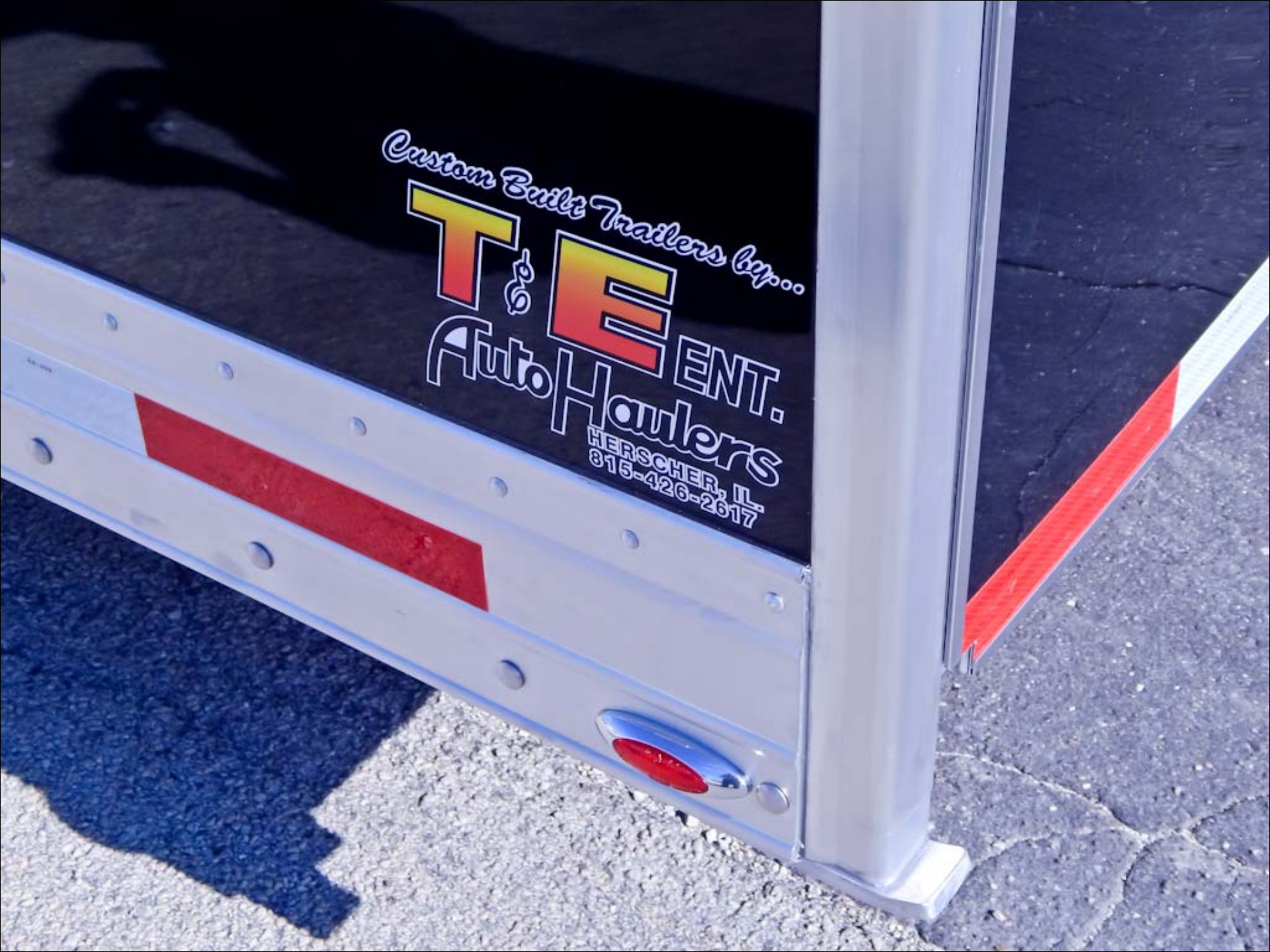




Custom Built Trailers by...

T & E
Auto Haulers ENT.

HERSCHER, IL.
815-426-2617











THINK
OUR AIM...
NO ACCIDENTS



THINK
OUR AIM...
NO ACCIDENTS



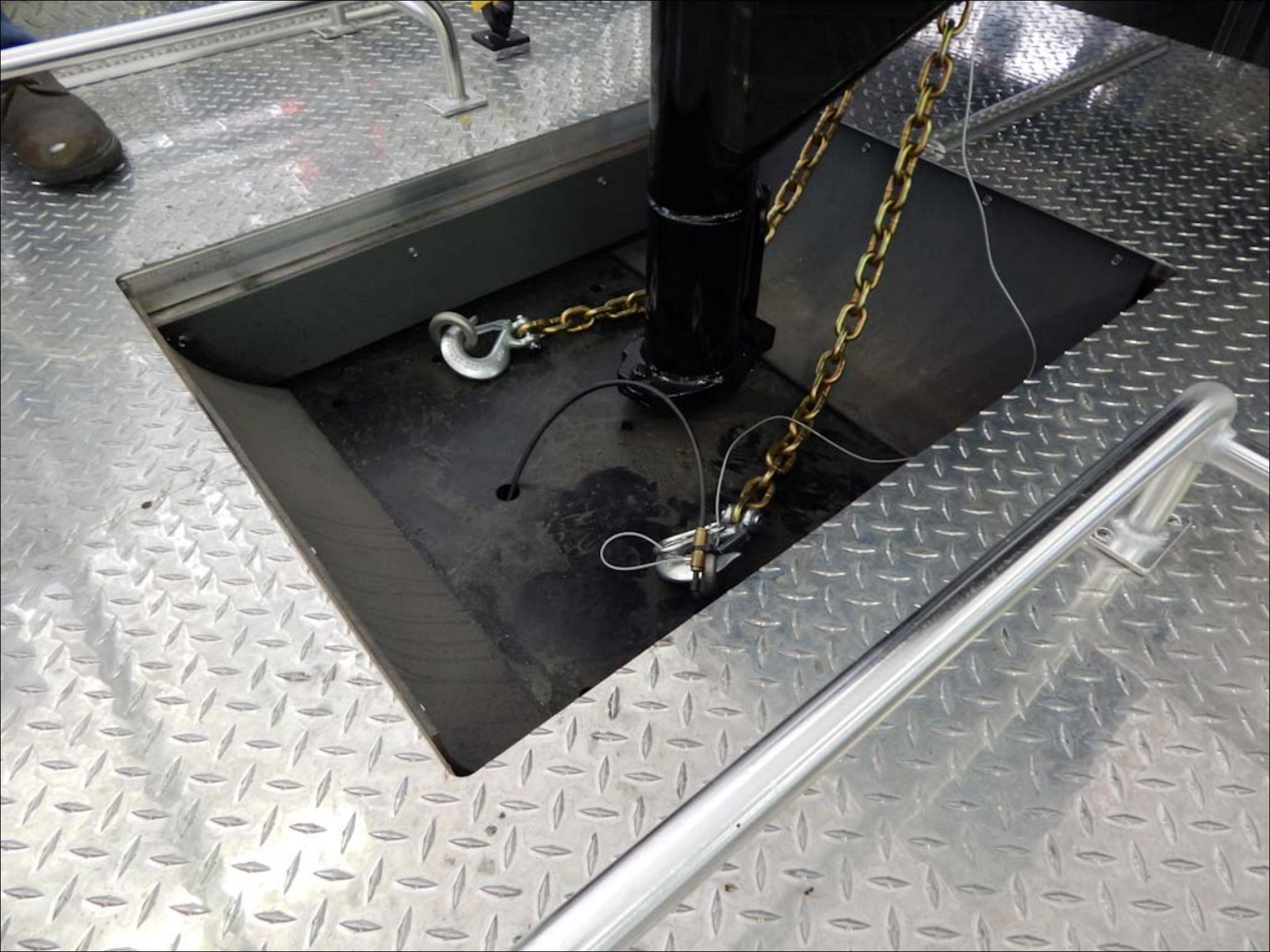
SAFETY WARNING
DO NOT ATTEMPT TO
REPAIR OR MAINTAIN
THIS EQUIPMENT
UNLESS YOU ARE
A QUALIFIED
TECHNICIAN.



THINK
OUR AIM...
NO ACCIDENTS













A BANGER
BE CAREFUL WHEN USING
DO NOT USE ON





HOT WATER OUT

Whirlpool

USE CRAFTSMAN WATER HEATER COMPANY
THIS UNIT IS MADE IN MEXICO
WHIRLPOOL WATER HEATER
MODEL: WHE11-1000-0000

EFFICIENCY	Capacity	Input	Output
Energy Factor	0.65	12000	10000
First Hour Rating	30	12000	10000
Recovery Factor	0.50	12000	10000

MADE IN MEXICO

Model Number: WHE11-1000-0000

TAPE HERE

TAPE HERE











**Digital
Auto
Voltage
Regulator**

ALL RECEPTACLES W/OUT PROTECTORS
NEUTRAL BONDING TO FRAME

CHOKES OFF

START ON

CIRCUIT BREAKER OFF

RESET TEST

MONITOR
OIL ALERT
WHEN OIL LEVEL IS LOW
ENGINE STOPS IMMEDIATELY

AUTO THROTTLE OFF ON

CIRCUIT PROTECTOR OFF ON

CIRCUIT PROTECTOR OFF ON

120V 30A 120V 25A 120V 20A

AC OUT 120V

30A

30A

25A

25A

NEUTRAL BONDING TO FRAME



WARNING

Do not operate this motor unless you have read and understood the safety information on the operator's manual.

Failure to properly operate and adjust the lifting vehicle and trailer can result in injury.

WARNING

Do not operate this motor unless you have read and understood the safety information on the operator's manual.

Failure to properly operate and adjust the lifting vehicle and trailer can result in injury.

WARNING

Do not walk on roof

If not warned, could result in injury.

WARNING

Do not walk on roof

If not warned, could result in injury.



CASTAIR
of Minnesota

CAUTION

WARNING
READ INSTRUCTIONS
BEFORE OPERATING
THIS EQUIPMENT
SEE USER MANUAL
FOR SAFETY INFORMATION

WARNING
READ INSTRUCTIONS
BEFORE OPERATING
THIS EQUIPMENT
SEE USER MANUAL
FOR SAFETY INFORMATION

CAUTION



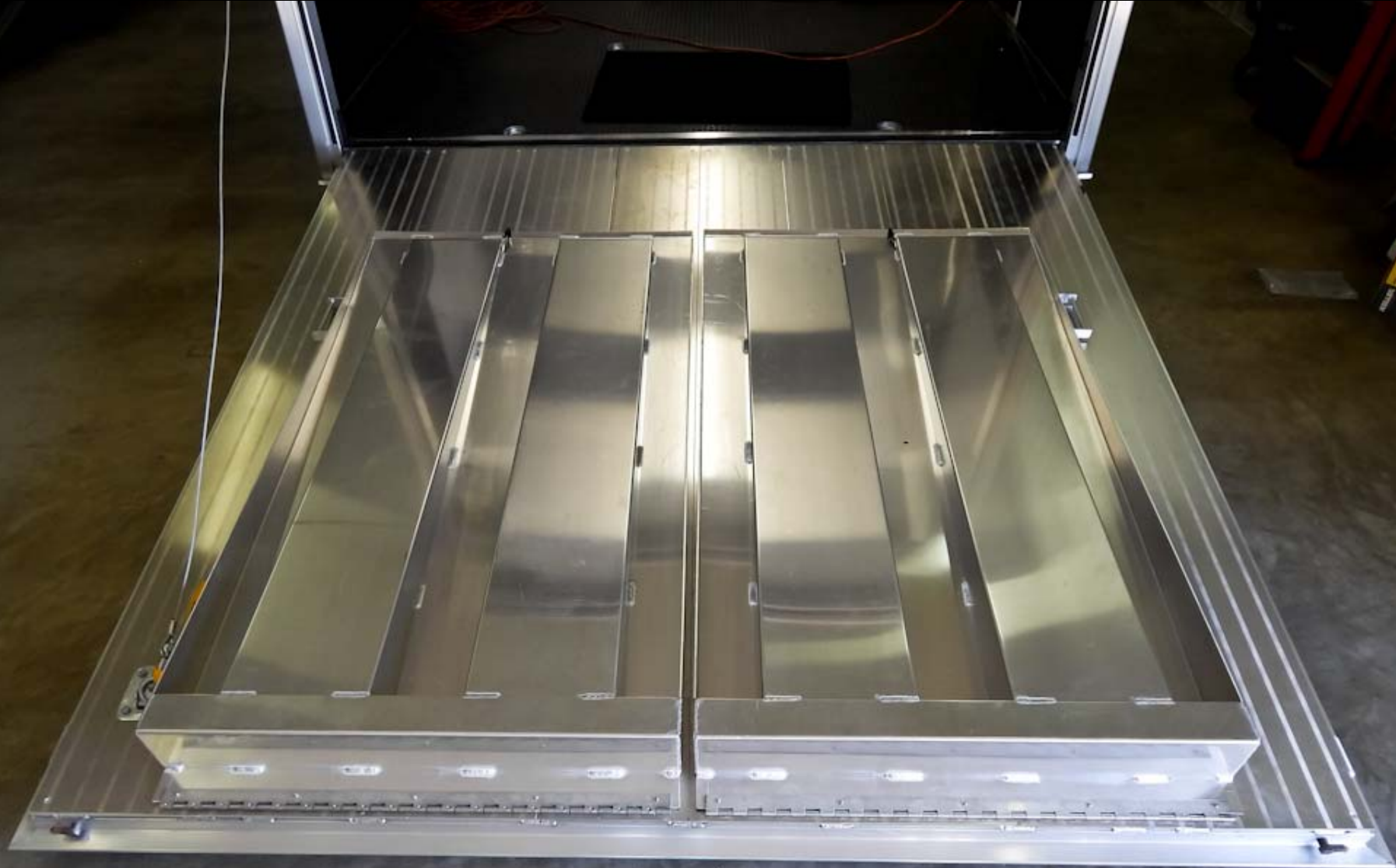
SEE CONNECTIONS
MODEL: 1000000
POWER: 1000000
CAP: 11.0 GAL
MAX P: 100 PSI
TEMP CAP: 100 PSI
ELECT: 20 GAL
DATE: 000000
MFG. NO: 000000

CAUTION
This unit is designed for use in a wellhead application. It is not intended for use in a residential or commercial application. Do not use this unit for any other purpose.

CASTAIR
of Minnesota

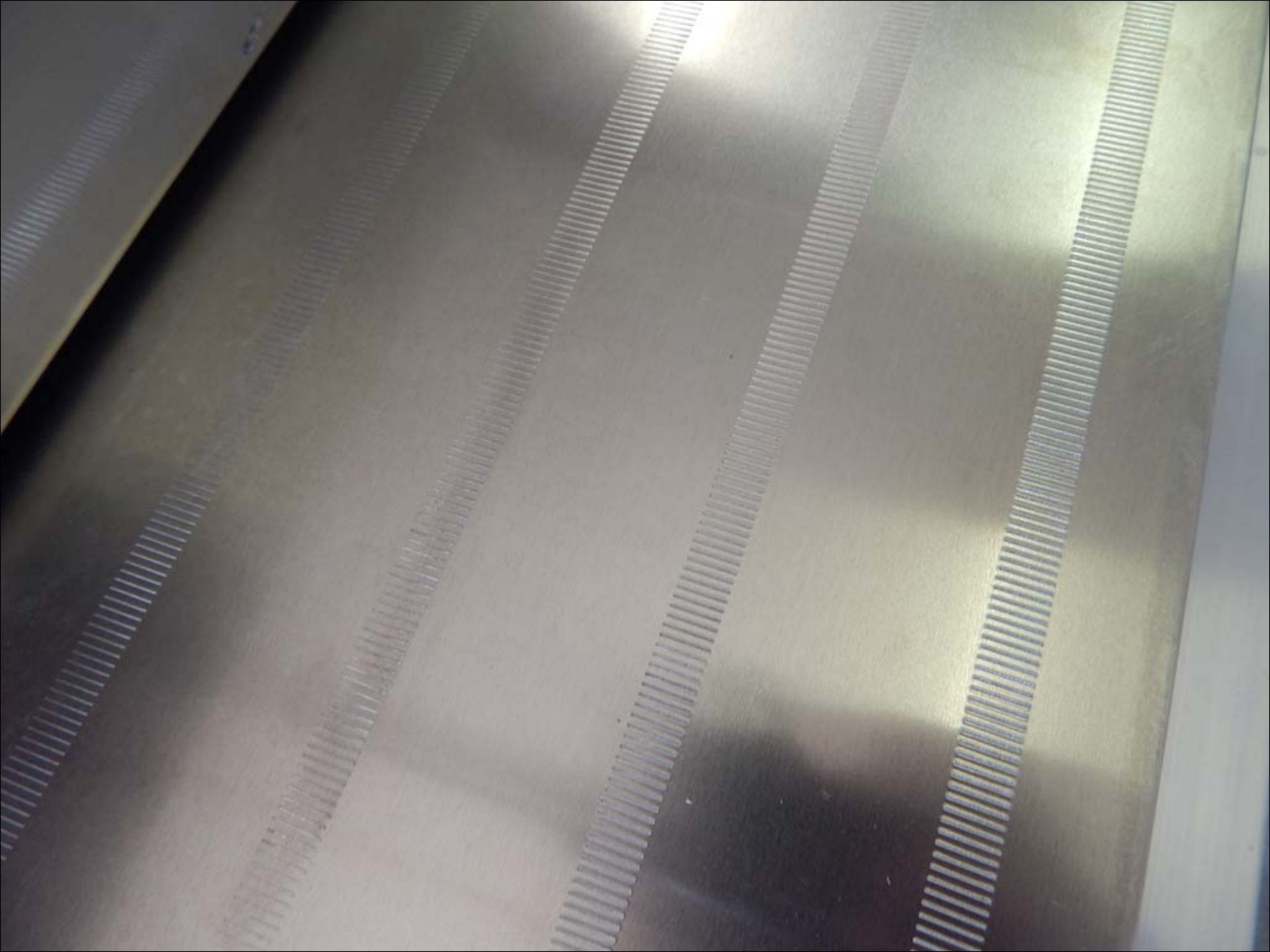
AUTOMATIC TRANSFER SWITCH
This switch is designed to automatically transfer power from the main power source to the backup power source in the event of a power outage. It is not intended for use in any other application.





























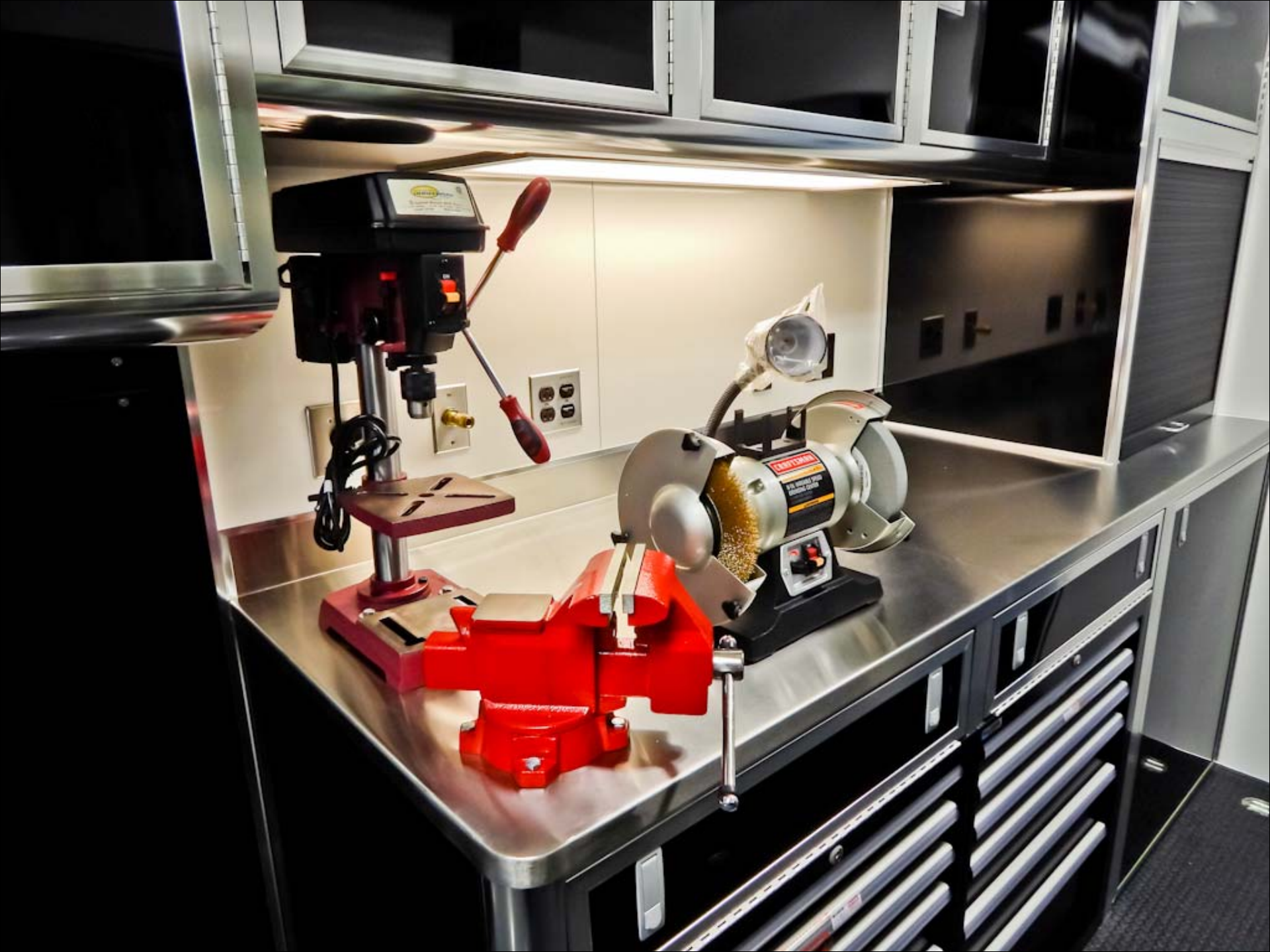






















DANGER

Use of any motorized equipment
on or near motorized equipment
may cause fire, explosion, or
other hazardous conditions.
Always use proper safety
procedures when operating
any equipment. To reduce the risk
of fire, explosion, or other
hazardous conditions, always
use proper safety procedures
when operating any equipment.
Always use proper safety
procedures when operating
any equipment. To reduce the risk
of fire, explosion, or other
hazardous conditions, always
use proper safety procedures
when operating any equipment.

DANGER

Use of any motorized equipment
on or near motorized equipment
may cause fire, explosion, or
other hazardous conditions.
Always use proper safety
procedures when operating
any equipment. To reduce the risk
of fire, explosion, or other
hazardous conditions, always
use proper safety procedures
when operating any equipment.
Always use proper safety
procedures when operating
any equipment. To reduce the risk
of fire, explosion, or other
hazardous conditions, always
use proper safety procedures
when operating any equipment.











































... windows, openings, or air ventilation
when vehicles are present.
7. Do not operate propane appliances, pilot lights, or
electrical equipment when motorized vehicles are present.
**FAILURE TO COMPLY COULD RESULT IN AN
INCREASED RISK OF FIRE, EXPLOSION,
ASPHYXIATION, DEATH, OR SERIOUS INJURY.**





